



Northern Virginia Regional Commission

REGIONAL COMMUTER FAST FERRY INFRASTRUCTURE GAP ANALYSIS

Project Initial Investigation

Fast Ferry Policy Committee Meeting #2

June 29, 2017

Prepared by:



In association with:
•Elliot Bay Design Group

Today's Agenda



- **Welcome & Self-Introductions**
- Corridors being evaluated – general concept of operations
- Terminal sites being considered
- Criteria for identifying gaps – what is a “gap?”
- Vessel Design Assumptions and bearing on gap analysis
- Other Matters of Interest
- Next Steering Committee Meeting – Date and location

Concept of Operations



- Primarily for commuters
- People home-based in Northern Virginia
- People working in
 - National Harbor, Gaylord, and MGM Grand
 - Joint Base Anacostia/Bolling
 - Department of Homeland Security
 - Downtown DC

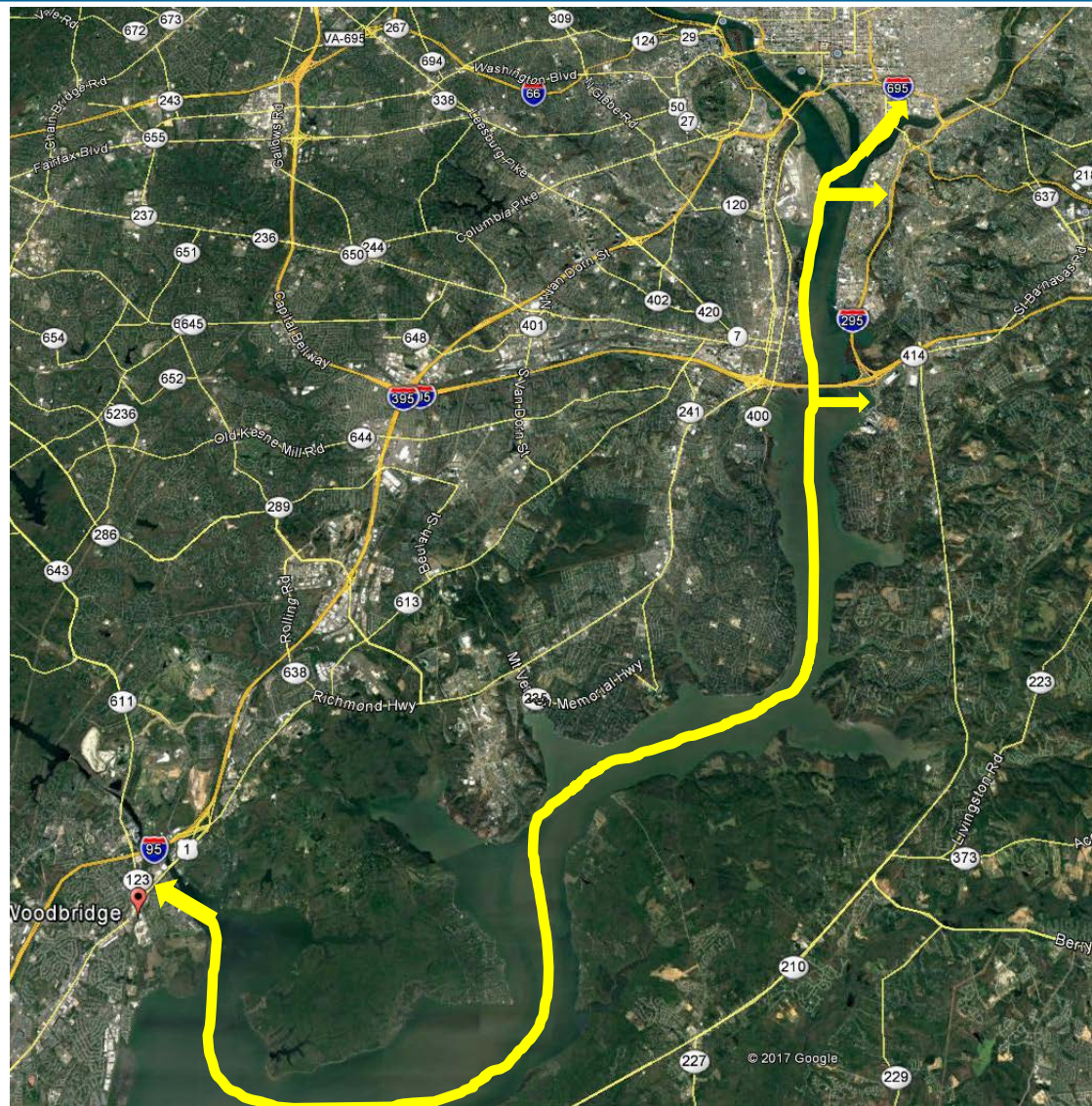
Corridors Being Evaluated



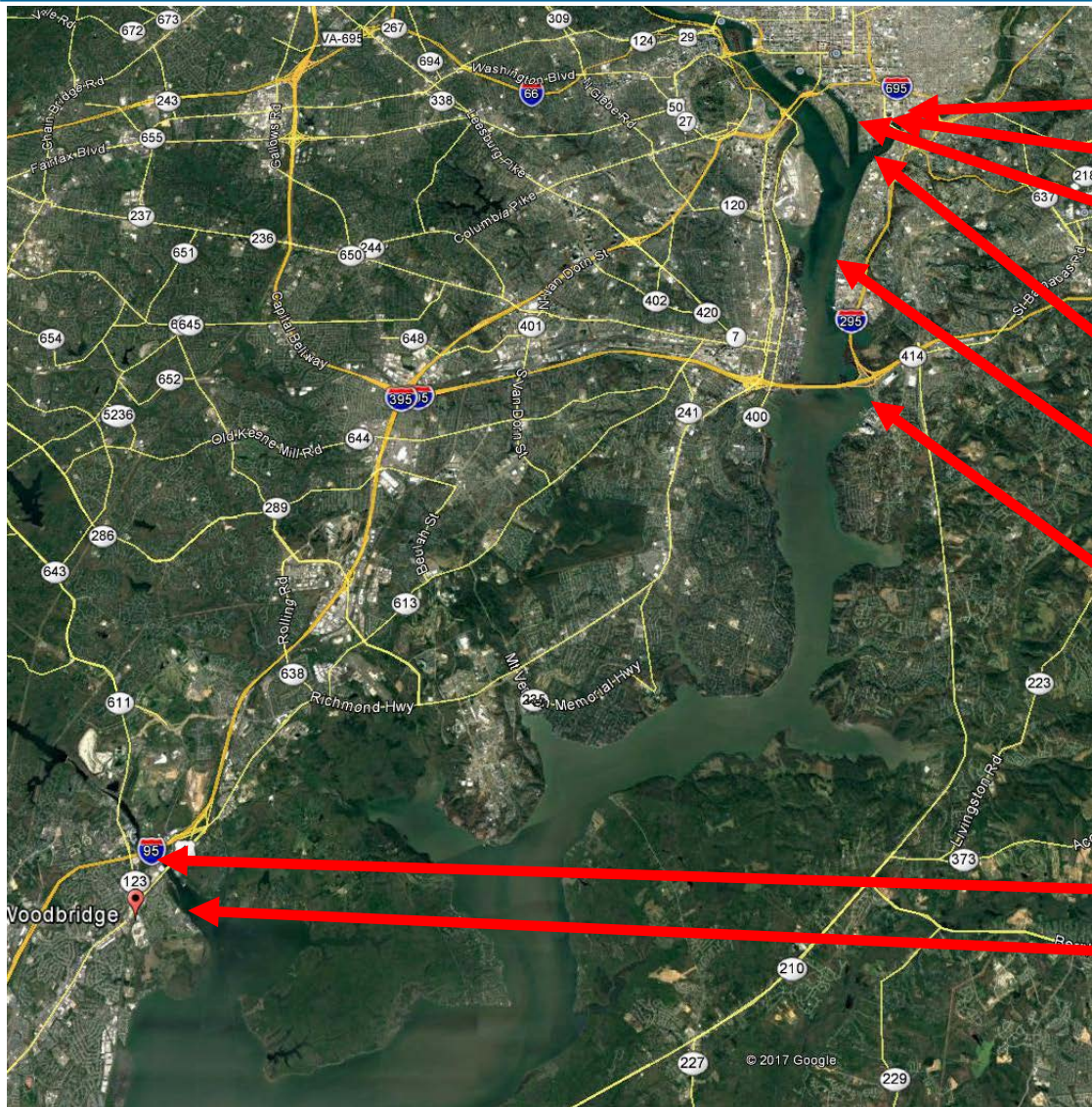
Routes:

Woodbridge, VA to

- National Harbor
- Joint Base Anacostia Bolling
- Downtown Washington, DC



Terminals Being Evaluated



- The Yards
- Diamond Teague Park
- The Wharf
- Joint Base Anacostia
- Bolling North
- Joint Base Anacostia
- Bolling South
- National Harbor
- Occoquan Marina
- Belmont Bay

Terminal Needs Implications



- Transit connections
- Good walkability
- Parking adjacent or nearby - but only in Woodbridge
- Ability to dock and unload ferry
- Passenger amenities – shelter, illumination, seating area

The difference between what exists today and what is needed to establish a commuter ferry operation within the next five years.

Looking for:

- Sites where grant funds can be used to improve the terminal
- Sites that make sense in terms of meeting the commute needs of the intended population

Fatal Flaws:

- Dredging needed
- Navigational space not adequate
- Extensive in-water construction required
- Unable to control the site

Selection Criteria:

- Transit connections (present or needed)
- Parking – only applies to Woodbridge
- Dock upgrades required
- Shore side access upgrades required
- Degree of site control
- Suited for application of FTA funds
- Degree of improvement for passenger amenities
- Cost of access
- Location suitability for commute market

Vessel Design Considerations





Next Steering Comm. Meetings



- #3 July 24 Georgetown
- #4 Proposed September 21 or 22
- #5 Proposed Week of October 23
- #6 Proposed Week of November 13

Other Matters of Interest



- Continue to need an eligible grantee for FTA funds
- Have reached out to FTA to resolve a number of outstanding questions regarding the grant and process. Awaiting responses to our questions.



NELSON
NYGAARD

Tim Payne

1402 Third Avenue

Suite 1200

Seattle, WA 98101

Office: (206) 357-7524

tpayne@nelsonnygaard.com